

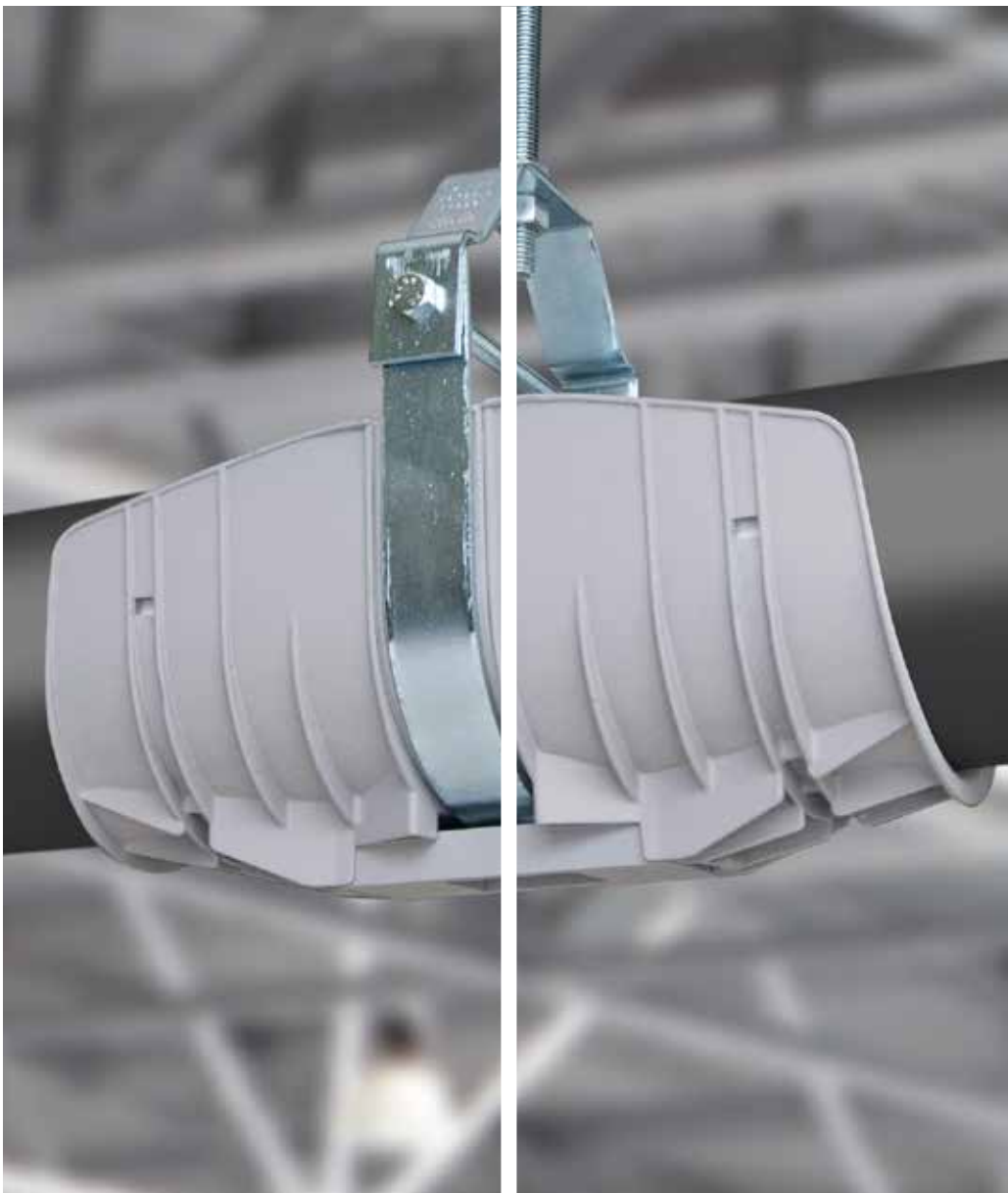
THE SIMPLE SOLUTION

# Insuguard

Armacell's Insuguard®, Insuguard® Multi and the family of accessories protect piping and its insulation from damage caused by pipe expansion and contraction. Allowing pipe movement within the support system minimizes maintenance and reduces energy loss. **Tool-free, it installs with just one click!**

- // Prevents rotation or displacement of saddles and damage to all insulation types
- // Solutions for all types and sizes of suspension systems
- // For plumbing, HVAC and refrigeration piping or even communications lines

[www.armacell.us](http://www.armacell.us) | [www.insuguard.com](http://www.insuguard.com)



 **armacell**<sup>®</sup>  
Insuguard<sup>®</sup>

# ONE CLICK SIMPLE INSTALLATION

When installing and maintaining pipe systems, the right combination of insulation, vapor retarder, and support system minimizes energy loss, maintains the pipe's structural integrity, and keeps the pipe system in place. However, get even one component wrong, and you risk substandard system operation and/or expensive repairs.

Pipe suspension and mounting systems support the weight of a pipe by transmitting the load to the adjacent structure. These systems also need to avoid damaging the pipe insulation at the contact points, especially during the severe linear movements that pipes can undergo due to normal thermal expansion and contraction.

In large installations such as supermarkets, pipe runs can exceed a mile long, which could expand and contract significant amounts introducing more potential failure points if the wrong support is specified. Damaged insulation and pipes compromise energy delivery, making critical refrigeration systems underperform.



Insuguard Multi pipe saddle shown with 1-click clevis adapter, above.

Original Insuguard pipe saddles are the one-piece solution for strut mount installations. It simply snaps on the strut and allows the pipe and insulation to expand and contract as needed, above right.

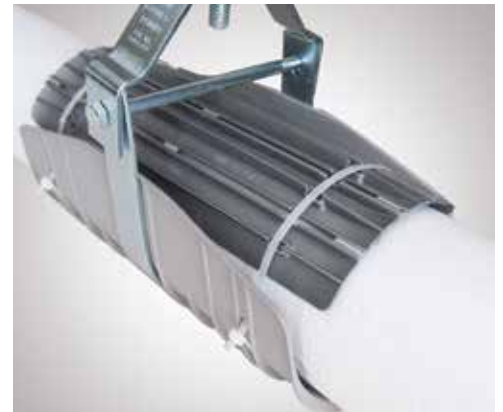


Potential issues with pipe suspension or mounting systems include shifting/falling saddles, condensation and mold growth, freezing and thawing, refrigerant leaks, insulation tear-off, and inefficient labor and material use. With normal pipe movement and expansion, saddles can slip out of place, exposing the insulation to pressure and compression. For cold systems, thermal bridging

can cause condensation, ice formation, and corrosion of the pipe and support. When supports fail, the insulated pipe run is unprotected from friction at the support points, tearing the insulation, leaving critical lines exposed. If these lines are inside a chase, the problem can go undetected causing serious property damage. Unsecured saddles that fall from the suspension system create serious safety and liability concerns.

Every adapter simply clicks into the Insuguard Multi channel. clevis adapter shown below, angle mount adapter, right.

InsuCover is secured with cable ties through the matching notches in the saddle, below right.



## PIPE SADDLES AND ACCESSORIES

Avoid these issues with Armacell's complete line of pipe saddles and accessories that eliminate common support problems AND will save time during installation.

Pipe movement is accommodated with **Insuguard's** rounded edge design that curves away from the pipe at both ends and protects the insulation when

expansion or contraction occurs.

**Insuguard Multi** saddles and adapters simply click in place to connect to any type of suspension or mounting system, regardless of size. Both systems are compatible with adjustable **InsuCover** which protects pipes. **InsuClip** and **ShockTech** are specially designed to work with the clevis adapter of Insuguard Multi.

**SAVE TIME WITH QUICK AND EASY, TOOL-FREE INSTALLATION OF PIPE SADDLES AND ACCESSORIES.**

### Insuguard

Original 1-piece pipe saddle designed for strut applications. Available in black and white.



### Insuguard Multi

Pipe saddle systems with interchangeable adapters for strut, clevis, H-beam, I-beam, steel angle and floor mounts.



### InsuCover

Pipe cover that shields the top of the pipe from damage. Adjustable width, attaches with cable ties.



### ShockTech

Magnetic water hammer detector with interchangeable color-coded flags for use with clevis adapter.



### InsuClip

Two-way fastener designed to secure piping or cables in the free space above the clevis cross bar.



## PREVENT THERMAL BRIDGING



Insulation compression at suspension locations breaks the thermal barrier. This results in thermal bridging and could cause condensation, freezing points and mold growth.



Insguard saddles have high walls which protect the liquid lines from strut, threaded rod and hangers and carry the weight of the pipe without thermal bridging.

## AVOID FALLING OVERHEAD PIPE SADDLES



Conventional saddles can slip out of place due to normal pipe movement and expansion. This exposes people to overhead dangers and creates serious safety and liability concerns.



The "click" sound indicates that the pipe support adapter is securely installed in the saddle. Additional features also ensure that the pipe saddle is reliably attached to the strut channel, clevis hanger or steel angle.

## ELIMINATE INSULATION TEAR-OFF



With standard metal or plastic supports, insulation tear-off occurs with pipe saddle displacement and exposes critical lines to the effects of friction.



Insguard's revolutionary curved edge saddle design allows the insulated pipe to expand and vibrate within the support with no possibility of tear-off.

INSUGUARD

# WHY INSUGUARD?



## THE BEST PIPE SUPPORT SYSTEM

Made of high quality, ultra-resistant polypropylene and an innovative design that distributes the weight of the piping system over a wider area, Insuguard is the **most practical solution** available today to:

1. Improve appearance with standardized pipe installations
2. Eliminate premature insulation tears, costly leaks and loss of refrigerated merchandise.



The curved lip of the all Insuguard saddles allow insulated pipe to move easily across the saddle without causing any damage or insulation tear-off. This is especially important to prevent condensation from building up on below ambient temperature lines. In open ceilings like supermarkets, condensation or freezing can cause moisture ingress as well as dripping that could be a danger to people below.

## FAST, TOOL-FREE INSTALLATION

**Insuguard** saddles prevent the problems of pipe expansion, but it's also easier and quicker to install



than metal or plastic shields or fussing with gluing traditional saddles. With just 1-click you can install Insuguard on struts, quickly moving down the line. With **Insuguard Multi**, no matter what type of support system you have — strut, steel angle, H-beam, I-beam, clevis or even floor mounts — you can use perfectly-sized saddles with interchangeable mount adapters. This keeps installation on track with the peace of mind that your piping is secure, yet flexible.

## USE DEDICATED ACCESSORIES FOR MORE VERSATILITY

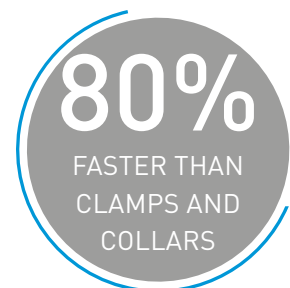
Both Insuguard and Insuguard Multi are compatible with the **InsuCover** pipe shield. The handy pipe cover is segmented so that it fits the curve of both large and small pipes, and can be cut to fit the exact pipe diameter.



For Insuguard Multi saddles using the clevis adapter there are two other great accessories. The innovative **ShockTech** magnetic water hammer detector uses color coded flags that are triggered by different shock tolerances. These flags will warn maintenance of trouble spots before water hammer can cause permanent pipe damage.



The **InsuClip** two-way fastener lets you take advantage of the empty space above the clevis cross bar and run additional piping or cables without installing more supports.



All data and technical information are based on results achieved under the specific conditions defined according to the testing standards referenced. Despite taking every precaution to ensure that said data and technical information are up to date, Armacell does not make any representation or warranty, express or implied, as to the accuracy, content or completeness of said data and technical information. Armacell also does not assume any liability towards any person resulting from the use of said data or technical information. Armacell reserves the right to revoke, modify or amend this document at any moment. It is the customer's responsibility to verify if the product is suitable for the intended application. The responsibility for professional and correct installation and compliance with relevant building regulations lies with the customer. This document does not constitute nor is part of a legal offer to sell or to contract.

At Armacell, your trust means everything to us, so we want to let you know your rights and make it easier for you to understand what information we collect and why we collect it. If you would like to find out about our processing of your data, please visit our [Data Protection Policy](#).

© Armacell, 2020. Insuguard, InsuCover, InsuClip and ShockTech are trademarks of the Armacell Group.  
00XXX| Insuguard | Mktbrochure | 112020 | NA | EN-A

## ABOUT ARMACELL

---

As the inventors of flexible foam for equipment insulation and a leading provider of engineered foams, Armacell develops innovative and safe thermal, acoustic and mechanical solutions that create sustainable value for its customers. Armacell's products significantly contribute to global energy efficiency making a difference around the world every day. With 3,135 employees and 24 production plants in 16 countries, the company operates two main businesses, Advanced Insulation and Engineered Foams. Armacell focuses on insulation materials for technical equipment, high-performance foams for high-tech and lightweight applications and next generation aerogel blanket technology.

For more information, please visit:

[www.armacell.us](http://www.armacell.us)

[info.us@armacell.com](mailto:info.us@armacell.com)

800-866-5638

